

LK 321 MultiFill® Solar



GB - TECHNICAL DATA

Working temperature	Min. -20 °C/Max. 120 °C (160 °C briefly)
Max. working pressure	1,0 MPa (10 bar)
Media	Water - Glycol mixture max. 50%
Thread standard	G - male thread, ISO 228/1
Dimension	Main valve: 1" Filling valve: 3/4"
Material, valve body	Brass EN 12165 CW617N
Material, sealing	P.T.F.E

DE - TECHNISCHE DATEN

Arbeitstemperatur	Min. -20 °C/Max. 120 °C (160 °C kurzfristig)
Max. Arbeitsdruck	1,0 MPa (10 bar)
Flüssigkeit	Wasser - Glykol max. 50%
Gewindenorm	G - Aussengewinde, ISO 228/1
Dimension	Hauptventil: 1" Befüllungsventil: 3/4"
Material, Gehäuse	Messing EN 12165 CW617N
Material, Dichtung	P.T.F.E

FR - CARACTÉRISTIQUES

Température de service	Min. -20 °C/Max. 120 °C (160 °C de courte durée)
Pression de service max.	1,0 MPa (10 bar)
Fluide	Eau - Glycol max. 50%
Filetage standard	G - filetage mâle, ISO 228/1
Dimension	Vanne principale: 1" Vanne de remplissage: 3/4"
Matériau, corps de vanne	Laiton EN 12165 CW617N
Matériau, joints	P.T.F.E

IT - DATI TECNICI

Temperatura di esercizio	Min. -20 °C/Max. 120 °C (160 °C di picco)
Pressione massima di esercizio	1,0 MPa (10 bar)
Fluidi	Acqua. Miscela Acqua - Glicole max. 50%
Filettatura standard	G - filettatura maschio, ISO 228/1
Dimensione	Valvola principale: 1" Valvola di riempimento: 3/4"
Materiale, corpo valvola	Ottone EN 12165 CW617N
Materiale, guarnizioni	P.T.F.E

FI - TEKNISET TIEDOT

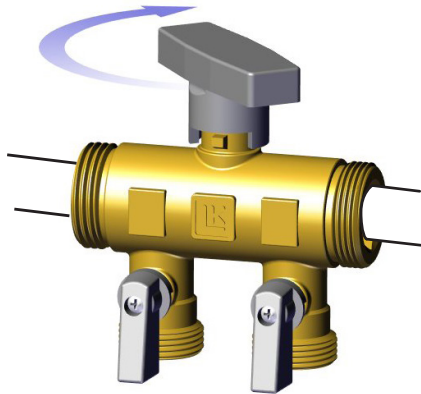
Käyttölämpötila	Min. -20 °C/Max. 120 °C (160 °C hetkellisesti)
Maks. käyttöpainne	1,0 MPa (10 bar)
Siirtoneste	Vesi - Glykolia maks. 50%
Kierrestandardi	G - ulkokierre, ISO 228/1
Koko	Pääventtiili: 1" Täyttöventtiili: 3/4"
Materiaali, venttiilipesä	Messinki EN 12165 CW617N
Materiaali, tiivisteet	P.T.F.E

SE - TEKNISK DATA

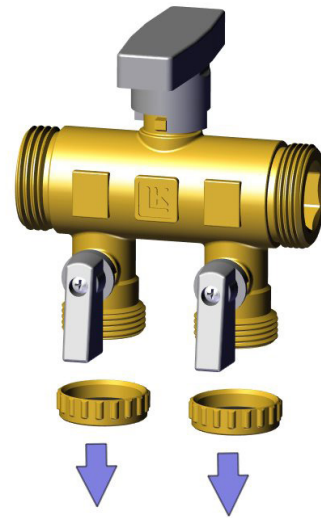
Arbeitstemperatur	Min. -20 °C/Max. 120 °C (160 °C kortvarigt)
Max. arbetstryck	1,0 MPa (10 bar)
Media	Vatten - Glykolinblandning max. 50%
Gängstandard	G - utvändig gänga, ISO 228/1
Dimension	Huvudventil: 1" Påfyllningsventil: 3/4"
Material, ventilhus	Mässing EN 12165 CW617N
Material, tätning	P.T.F.E

FILLING OF REFRIGERANT | KÜHLMITTEL AUFFÜLLEN | LORS DU REMPLISSAGE DE FLUIDE FRIGORIGÈNE | RIEMPIMENTO DI REFRIGERANTE | KYLMÄKULJETUSNESTEEN TÄYTTÖ | PÅFYLLNING AV KÖLDBÄRARVÄTSKA

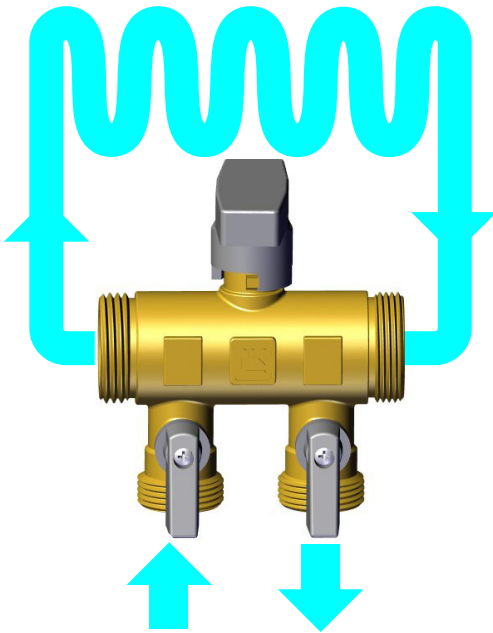
1



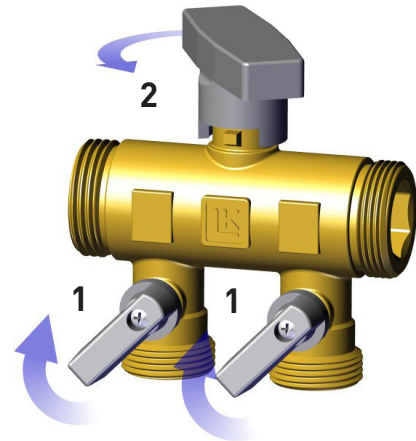
2



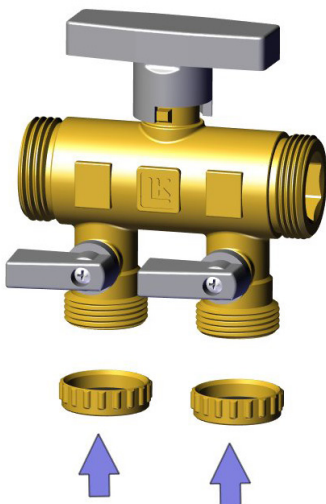
3



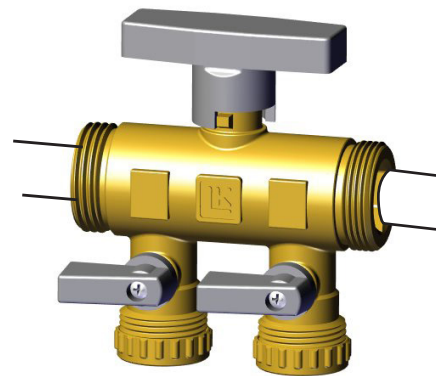
4

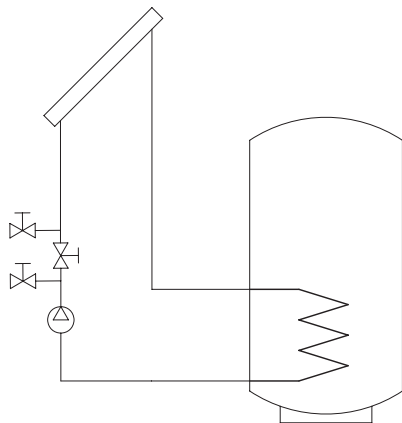


5



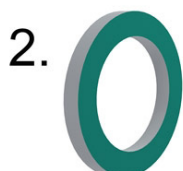
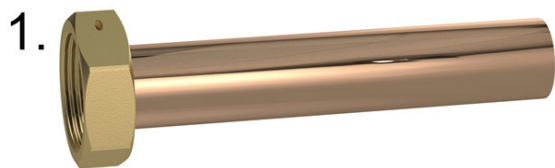
6





ACCESSORIES | ZUBEHÖR | ACCESSOIRES | ACCESSORI | LISÄVARUSTEET | TILLBEHÖR

Part No. Teil Nr. Pièce No Ogetto No Osa nr. Del nr.	Art. no. Art. Nr. No de réf. Codice Tuote nr. Art. nr.	Article Artikel Article Articolo Nimike Artikel
1	299189	Flanged pipe Flanschrohr Tuyau à bride Tubo flangiato Laip- papatki Flänsat rör
2	013035	C4430 G25 - Gasket Klingersil Dichtungen Klingersil Joint Klingersil Guarnizione Klingersil Tiiviste Klingersil Packning Klingersil
3	095410	Connection kit 18 mm x M 25 Verschraubungssatz 18 mm x G 25 Jeu de raccords à vis 18 mm x G 25 Kit di connessione 18 mm x G 25 Ruuviliitossarja 18 mm x G 25 Koppelsatz 18 mm x G 25
	095411	Connection kit 22 mm x M 25 Verschraubungssatz 22 mm x G 25 Jeu de raccords à vis 22 mm x G 25 Kit di connessione 22 mm x G 25 Ruuviliitossarja 22 mm x G 25 Koppelsatz 22 mm x G 25





LK ARMATUR AB
Garnisonsgatan 49
SE-254 66 Helsingborg
Info@lkarmatur.com
lkarmatur.com